

Expulsion Fuse Links for Use in High Voltage Distribution Cut-Outs

- Wide range of options available from 15kV to 72kV in ANSI T & K characteristics.
- Extra rapid option also available.



Cooper Bussmann Expulsion Fuse Links

Cooper Bussmann expulsion fuse links have been widely used throughout the world for over 40 years. They have in that time built up a formidable reputation and consistency of performance.

Cooper Bussmann expulsion fuse links are designed to be interchangeable with other types of manufacturers cut-out units and are available in several patterns.

Application

Expulsion fuse links current ratings should be selected on the basis of maximum expected transient no damage currents rather than on full load current. In addition, the selection of higher current ratings will reduce the possibility of supply interruption due to transient surges such as those due to lightning strikes (for information on our Surge Protection Device SPD, please contact buletechnical@cooperindustries.com).

Links should be handled with a reasonable degree of care when installing. Excessively rough handling may damage the element.

It is normal, under certain fault conditions, for arc extinguishing material and/or metal particles to be expelled from the fuse assembly. It is therefore recommended that reasonable precautions be taken to prevent the installation being approached by unauthorised persons.

How to order - Parts Referencing System

Rated Voltage (kV)	1st Letter Type of Current Characteristics	2nd Letter Type of Termination	Rated Current (A)
15 25 46 72	<p>T = complies with ANSI C 37-42 requirements for slow acting T characteristics</p> <p>K = complies with ANSI C 37-42 requirements for fast acting K characteristics</p> <p>XA = this type of expulsion fuse link has an extra rapid characteristic. It is suitable for applications where a high degree of system protection is required at the expense of discrimination</p> <p>S = Solid links rated at 100A are also available in both button head and universal versions for fitting into expulsion fuse carriers where required. These can be ordered in a similar way using the abbreviation S, e.g. 15SB, etc</p>	<p>B = a fixed NEMA button head link</p> <p>U = a universal link, with double tail and slip off NEMA button head</p> <p>D = double tailed link without NEMA button head</p> <p>BR = as pattern B but the button head is attached via a 1/4 UNF thread to allow use of an extension rod.</p> <p>See outline drawings opposite page for reference</p>	1, 2, 3, 4, 5, 6, 7.5, 8, 10, 12, 15, 20, 25, 30, 40, 50, 60, 65, 75, 80, 100

Thus a typical ordering reference for a 15kV NEMA type K, button head 30A fuse link would be **15KB30** expulsion fuse link.

The fuse link assembly for a given range is standard to all rated voltages. The exception is that the tail length is varied to suit the dimensions of expulsion carrier of different ratings.

Expulsion Fuse Links

Specifications

Description: Expulsion fuse links available in a wide range of options from 15kV to 72kV in ANSI T&K characteristics.

Ratings:

Rated Voltage: 15 to 72kV

Amps: 1 to 100A

Breaking Capacity: depends on voltage but is approximately 8kA

Agency Information:

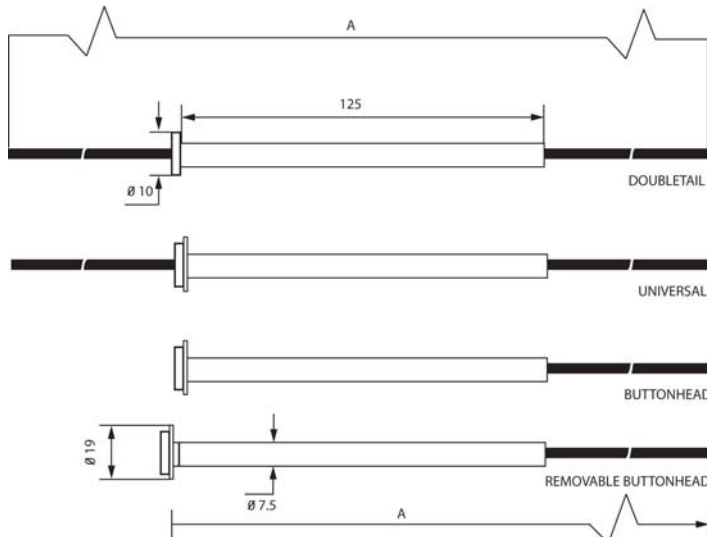
Type T: complies with ANSI C37-42

Type K: complies with ANSI C37-42

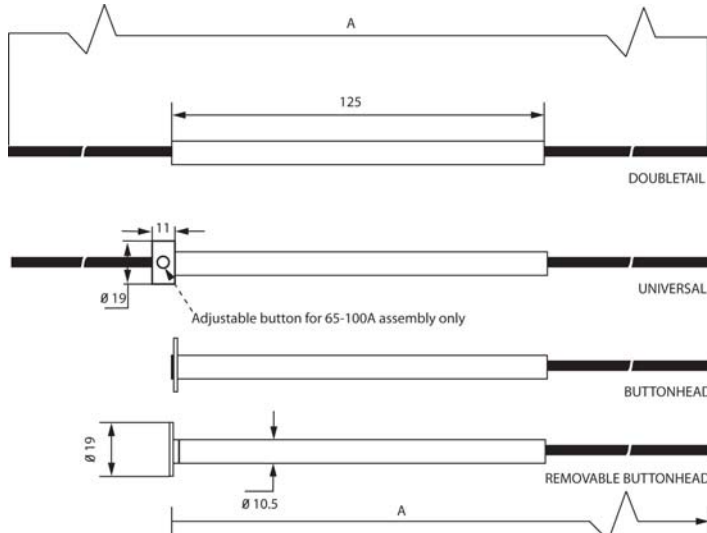
Time-Current Curves and Cut-Off Curves: see list page 119 and data on CD at the back of the catalogue.

Dimensions (mm):

1-50A



60-100A



Packaging:

Up to and including 50A: 25 in a carton

From 60A to 100A: 10 in a carton

To avoid incorrect replacement the fuse links have colour coded labels:

Pink label: Type XA

Yellow label: Type K

Green label: Type T

Typical Applications:

- Primary side transformer protection
- Feeder protection
- Capacitor bank protection

Type kV	A
15kV	533 (21")
25kV	660 (26")
46kV	787 (31")
72kV	1016 (40")

Notes: Type BR is similar to button head shown, except that the button head is attached via a 1/4 UNF thread.

Tails can be cut to any length.