

5.5kV to 38kV E-Rated DIN Fuse Links

Specifications

Description: DIN dimensional E-Rated power fuse links with striker fitted for indoor use.

Agency: Meets E requirements per ANSI C37.46, meets General Purpose and Full Range requirements per ANSI C37.40.

Ratings:

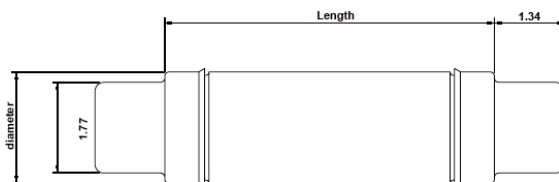
Rated Voltage: 5.5 - 38kV

Rated Current: 10 - 450E

IR: 25 - 65kA

Time-Current Curves and Cut-Off Curves: see list page 121 and data on CD at the back of the catalogue.

Dimensions:



Features and Benefits:

- *Cool running, low watts loss and power dissipation* thanks to the M-effect ensuring high levels of substation utilisation
- *100% X-ray*, all our Medium Voltage fuse links are X-rayed ensuring the highest possible standards are maintained

Typical Applications:

- Medium voltage transformer primary protection.
- Medium voltage feeder circuit protection.

Part Numbers

Part Number	Rated Current	Interrupting Capacity Sym kA	Number of Barrels	Length inches (mm)	Diameter inches (mm)
5.5kV General Purpose					
55GDMSJ10E	10E	65	1	17.40 (442)	2 (51)
55GDMSJ15E	15E	65	1	17.40 (442)	2 (51)
55GDMSJ20E	20E	65	1	17.40 (442)	2 (51)
55GDMSJ25E	25E	65	1	17.40 (442)	2 (51)
55GDMSJ30E	30E	65	1	17.40 (442)	2 (51)
55GDMSJ40E	40E	65	1	17.40 (442)	2 (51)
55GDMSJ50E	50E	65	1	17.40 (442)	2 (51)
55GDMSJ65E	65E	65	1	17.40 (442)	2 (51)
55GDMSJ80E	80E	65	1	17.40 (442)	2 (51)
55GDMSJ100E	100E	65	1	17.40 (442)	2 (51)
55GDMSJ125E	125E	65	1	17.40 (442)	2 (51)
55GFMSJ150E	150E	65	1	17.40 (442)	3 (76)
55GFMSJ175E	175E	65	1	17.40 (442)	3 (76)
55GFMSJ200E	200E	65	1	17.40 (442)	3 (76)
55GFMSJ250E	250E	65	1	17.40 (442)	3 (76)
55GFMSJ300E	300E	65	1	17.40 (442)	3 (76)
55GFMSJ350E	350E	65	1	17.40 (442)	3 (76)
55GFMSJ400E	400E	65	1	17.40 (442)	3 (76)
55GFMSJ450E	450E	65	1	17.40 (442)	3 (76)
15.5kV General Purpose					
155GXQSJ175E	175E	65	1	21.14 (537)	3.5 (88)
155GXQSJ200E	200E	65	1	21.14 (537)	3.5 (88)

5.5kV to 38kV E-Rated DIN Fuse Links

Part Numbers

Part Number	Rated Current	Interrupting Capacity Sym kA	Number of Barrels	Length inches (mm)	Diameter inches (mm)
17.5kV General Purpose					
175GDMSJ10E	10E	65	1	17.40 (442)	2 (51)
175GDMSJ15E	15E	65	1	17.40 (442)	2 (51)
175GDMSJ20E	20E	65	1	17.40 (442)	2 (51)
175GDMSJ25E	25E	65	1	17.40 (442)	2 (51)
175GDMSJ30E	30E	65	1	17.40 (442)	2 (51)
175GFMSJ40E	40E	65	1	17.40 (442)	3 (76)
175GFMSJ50E	50E	65	1	17.40 (442)	3 (76)
175GFMSJ65E	65E	65	1	17.40 (442)	3 (76)
175GXMSJ80E	80E	65	1	17.40 (442)	3.5 (88)
175GXMSJ100E	100E	65	1	17.40 (442)	3.5 (88)
175GXQSJ125E	125E	65	1	21.14 (537)	3.5 (88)
175GXQSJ150E	150E	65	1	21.14 (537)	3.5 (88)
25.8kV Full Range					
258GDQSJ10E	10E	25	1	21.14 (537)	2 (51)
258GDQSJ15E	15E	25	1	21.14 (537)	2 (51)
258GDQSJ20E	20E	25	1	21.14 (537)	2 (51)
258GDQSJ25E	25E	25	1	21.14 (537)	2 (51)
258GDQSJ30E	30E	25	1	21.14 (537)	2 (51)
258GXQSJ40E	40E	25	1	21.14 (537)	3.46 (88)
258GXQSJ50E	50E	25	1	21.14 (537)	3.46 (88)
258GXQSJ65E	65E	25	1	21.14 (537)	3.46 (88)
258GXZSJ80E	80E	25	1	28.03 (712)	3.46 (88)
258GXZSJ100E	100E	25	1	28.03 (712)	3.46 (88)
38kV Full Range					
38GFZSJ10E	10E	25	1	28.03 (712)	3 (76)
38GFZSJ15E	15E	25	1	28.03 (712)	3 (76)
38GFZSJ20E	20E	25	1	28.03 (712)	3 (76)
38GFZSJ25E	25E	25	1	28.03 (712)	3 (76)
38GFZSJ30E	30E	25	1	28.03 (712)	3 (76)
38GXZSJ40E	40E	25	1	28.03 (712)	3.46 (88)
38GXZSJ50E	50E	25	1	28.03 (712)	3.46 (88)
38GXZSJ65E	65E	25	1	28.03 (712)	3.46 (88)

5.5kV E-Rated Fuse Links for Transformers and Feeder protection

Specifications

Description: E-Rated power fuse links having full range clearing capability for medium voltage transformer circuit protection.

Ratings:

Rated Voltage: 5.5kV
 Rated Current: 5 - 450E
 IR: 50kA

Time-Current Curves and Cut-Off Curves: see list page 121 and data on CD at the back of the catalogue.

Dimensions: See outline drawings below and part numbers page 80.



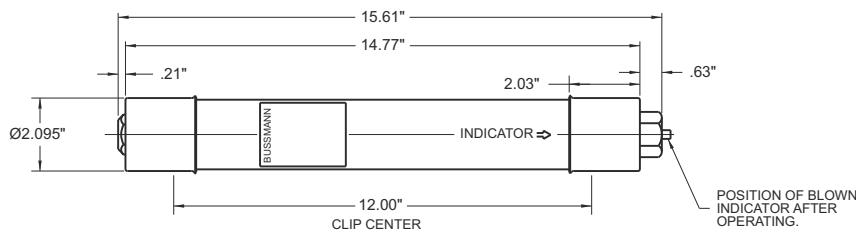
Features and Benefits:

- Cool running, low watts loss and power dissipation thanks to the M-effect ensuring high levels of substation utilisation
- 100% X-ray, all our Medium Voltage fuse links are X-rayed ensuring the highest possible standards are maintained

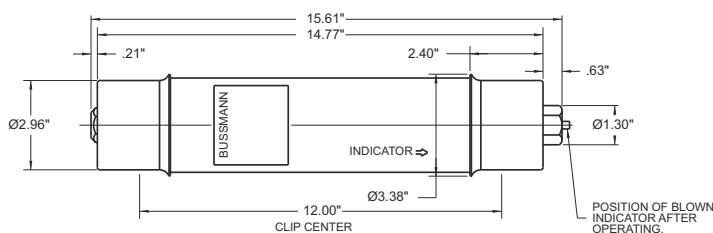
Typical Applications:

- Medium voltage transformer primary protection.
- Medium voltage feeder circuit protection.

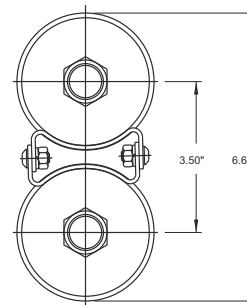
MV055F1CAX



MV055F1DAX



Double Barrel Dimensions



5.5kV E-Rated Fuse Links for Transformers and Feeder protection

Part Numbers

Part Number	Rated Current	Interrupting Capacity Sym kA	Number of Barrels	Length inches (mm)	Diameter inches (mm)	Clip Center inches (mm)
5.5FFNHA30E	30E	50	1	15.87 (403)	3 (76)	12 (304)
5.5FFNHA40E	40E	50	1	15.87 (403)	3 (76)	12 (304)
5.5FFNHA50E	50E	50	1	15.87 (403)	3 (76)	12 (304)
5.5FFNHA65E	60E	50	1	15.87 (403)	3 (76)	12 (304)
5.5FFNHA75E	75E	50	1	15.87 (403)	3 (76)	12 (304)
5.5FFNHK100E	100E	50	2	15.87 (403)	3 (76)	12 (304)
5.5FFNHK150E	150E	50	2	15.87 (403)	3 (76)	12 (304)
5.5BFNHA80*	80A	50	1	15.87 (403)	3 (76)	12 (304)
5.5BFNHA100*	100A	50	1	15.87 (403)	3 (76)	12 (304)
5.5BFNHA150*	150A	50	1	15.87 (403)	3 (76)	12 (304)
5.5BKNHA200*	200A	50	1	15.87 (403)	3 (76)	12 (304)
5.5BFNHK250*	250A	50	2	15.87 (403)	3 (76)	12 (304)
5.5BFNHK300*	300A	50	2	15.87 (403)	3 (76)	12 (304)
5.5BFNHK400*	400A	50	2	15.87 (403)	3 (76)	12 (304)
MV055F1CAX5E	5E	50	1	15.75 (400)	2 (50)	12 (304)
MV055F1CAX7E	7E	50	1	15.75 (400)	2 (50)	12 (304)
MV055F1CAX10E	10E	50	1	15.75 (400)	2 (50)	12 (304)
MV055F1CAX15E	15E	50	1	15.75 (400)	2 (50)	12 (304)
MV055F1CAX20E	20E	50	1	15.75 (400)	2 (50)	12 (304)
MV055F1CAX25E	25E	50	1	15.75 (400)	2 (50)	12 (304)
MV055F1CAX30E	30E	50	1	15.75 (400)	2 (50)	12 (304)
MV055F1CAX40E	40E	50	1	15.75 (400)	2 (50)	12 (304)
MV055F1CAX50E	50E	50	1	15.75 (400)	2 (50)	12 (304)
MV055F1CAX65E	65E	50	1	15.75 (400)	2 (50)	12 (304)
MV055F1DAX10E	10E	50	1	15.75 (400)	3 (76)	12 (304)
MV055F1DAX15E	15E	50	1	15.75 (400)	3 (76)	12 (304)
MV055F1DAX20E	20E	50	1	15.75 (400)	3 (76)	12 (304)
MV055F1DAX25E	25E	50	1	15.75 (400)	3 (76)	12 (304)
MV055F1DAX80E	80E	50	1	15.75 (400)	3 (76)	12 (304)
MV055F1DAX125E	125E	50	1	15.75 (400)	3 (76)	12 (304)
MV055F1DAX175E	175E	50	1	15.75 (400)	3 (76)	12 (304)
MV055F1DAX200E	200E	50	1	15.75 (400)	3 (76)	12 (304)
MV055F2DAX250E	250E	50	2	15.75 (400)	3 (76)	12 (304)
MV055F2DAX300E	300E	50	2	15.75 (400)	3 (76)	12 (304)
MV055F2DAX350E	350E	50	2	15.75 (400)	3 (76)	12 (304)
MV055F2DAX400E	400E	50	2	15.75 (400)	3 (76)	12 (304)
MV055F2DAX450E	450E	50	2	15.75 (400)	3 (76)	12 (304)

* These ratings are classed as back-up fuse links

8.25kV E-Rated Fuse Links for Transformers and Feeder Protection

Specifications

Description: E-Rated power fuse links having full range clearing capability for medium voltage transformer circuit protection.

Ratings:

Rated Voltage: 8.25kV
 Rated Current: 80 - 200A, 20 - 150E
 IR: 50kA

Time-Current Curves and Cut-Off Curves: see list page 121 and data on CD at the back of the catalogue.



Features and Benefits:

- *Cool running, low watts loss and power dissipation* thanks to the M-effect ensuring high levels of substation utilisation
- *100% X-ray*, all our Medium Voltage fuse links are X-rayed ensuring the highest possible standards are maintained

Typical Applications:

- Medium voltage transformer primary protection.
- Medium voltage feeder circuit protection.

Part Numbers

Part Number	Rated Current	Interrupting Capacity Sym kA	Number of Barrels	Length inches (mm)	Diameter inches (mm)	Clip Center inches (mm)
8.25FFNHA20E	20E	50	1	15.87 (403)	3 (76)	12 (304)
8.25FFNHA25E	25E	50	1	15.87 (403)	3 (76)	12 (304)
8.25FFNHA30E	30E	50	1	15.87 (403)	3 (76)	12 (304)
8.25FFNHA40E	40E	50	1	15.87 (403)	3 (76)	12 (304)
8.25FFNHA50E	50E	50	1	15.87 (403)	3 (76)	12 (304)
8.25FFNHA65E	65E	50	1	15.87 (403)	3 (76)	12 (304)
8.25FFNHA75E	75E	50	1	15.87(403)	3 (76)	12 (304)
8.25FFNHK100E	100E	50	2	15.87 (403)	3 (76)	12 (304)
8.25FFNHK150E	150E	50	2	15.87 (403)	3 (76)	12 (304)
8.25BFNHA80*	80A	50	1	15.87 (403)	3 (76)	12 (304)
8.25BFNHA100*	100A	50	1	15.87 (403)	3 (76)	12 (304)
8.25BFNHA150*	150A	50	2	15.87 (403)	3 (76)	12 (304)
8.25BFNHA200*	200A	50	2	15.87 (403)	3 (76)	12 (304)

* These ratings are classed as Back-up fuses

15.5kV E-Rated Fuse Links for Transformers and Feeder Protection

Specifications

Description: E-Rated power fuse links having full range clearing capability for medium voltage transformer circuit protection.

Ratings:

Rated Voltage: 15.5kV
 Rated Current: 5 - 200E
 IR: 50kA

Time-Current Curves and Cut-Off Curves: see list page 121 and data on CD at the back of the catalogue.

Dimensions: See outline drawings below and part numbers table opposite page.



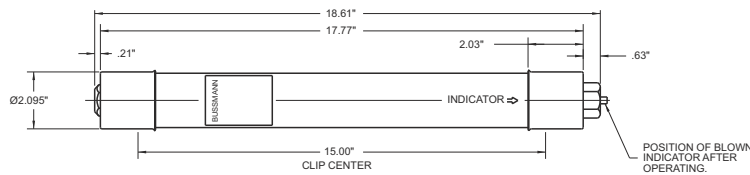
Features and Benefits:

- Cool running, low watts loss and power dissipation thanks to the M-effect ensuring high levels of substation utilisation
- 100% X-ray, all our Medium Voltage fuse links are X-rayed ensuring the highest possible standards are maintained

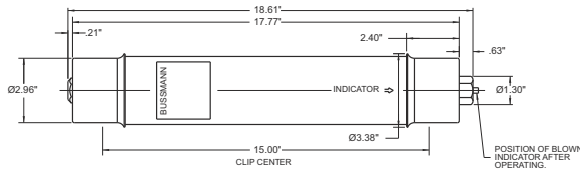
Typical Applications:

- Medium voltage transformer primary protection.
- Medium voltage feeder circuit protection.

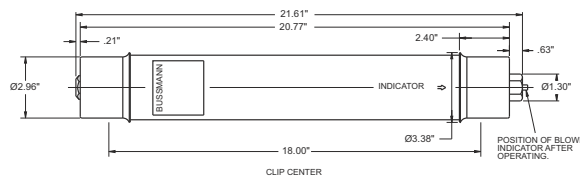
MV155F1CBX



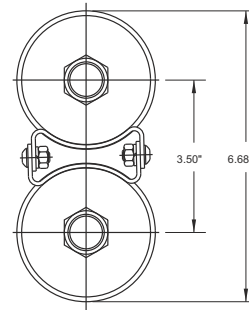
MV155F1DBX



MV155F1DCX



Double Barrel Dimensions



15.5kV E-rated Fuse Links for Transformers and Feeder Protection

Part Numbers

Part Number	Rated Current	Interrupting Capacity Sym kA	Number of Barrels	Length inches (mm)	Diameter inches (mm)	Clip Center inches (mm)
15.5FFVHA15E	15E	50	1	18.86 (479)	3 (76)	15
15.5FFVHA20E	20E	50	1	18.86 (479)	3 (76)	15
15.5FFVHA25E	25E	50	1	18.86 (479)	3 (76)	15
15.5FFVHA30E	30E	50	1	18.86 (479)	3 (76)	15
15.5FFVHA40E	40E	50	1	18.86 (479)	3 (76)	15
15.5FFVHA50E	50E	50	1	18.86 (479)	3 (76)	15
15.5FFVHA65E	65E	50	1	18.86 (479)	3 (76)	15
15.5FFVHA75E	75E	50	1	18.86 (479)	3 (76)	15
15.5FFVHK100E	100E	50	2	18.86 (479)	3 (76)	15
15.5FFVHK150E	150E	50	2	18.86 (479)	3 (76)	15
MV155F1CBX5E	5E	50	1	18.75 (476)	2 (50)	15
MV155F1CBX7E	7E	50	1	18.75 (476)	2 (50)	15
MV155F1CBX10E	10E	50	1	18.75 (476)	2 (50)	15
MV155F1CBX15E	15E	50	1	18.75 (476)	2 (50)	15
MV155F1CBX20E	20E	50	1	18.75 (476)	2 (50)	15
MV155F1CBX25E	25E	50	1	18.75 (476)	2 (50)	15
MV155F1CBX30E	30E	50	1	18.75 (476)	2 (50)	15
MV155F1DBX10E	10E	50	1	18.75 (476)	3 (76)	15
MV155F1DBX80E	80E	50	1	18.75 (476)	3 (76)	15
MV155F1DBX100E	100E	50	1	18.75 (476)	3 (76)	15
MV155F2DBX125E	125E	50	2	18.75 (476)	3 (76)	15
MV155F2DBX175E	175E	50	2	18.75 (476)	3 (76)	15
MV155F2DBX200E	200E	50	2	18.75 (476)	3 (76)	15
MV155F1DCX65E	65E	50	1	21.75 (552)	3 (76)	18
MV155F1DCX80E	80E	50	1	21.75 (552)	3 (76)	18
MV155F1DCX100E	100E	50	1	21.75 (552)	3 (76)	18
MV155F2DCX125E	125E	50	2	21.75 (552)	3 (76)	18
MV155F2DCX150E	150E	50	2	21.75 (552)	3 (76)	18
MV155F2DCX175E	175E	50	2	21.75 (552)	3 (76)	18
MV155F2DCX200E	200E	50	2	21.75 (552)	3 (76)	18

JCX, JCY, JCU, JCZ and JDZ E-Rated Fuse Links for Potential and Small Power Transformers

Specifications

Description: Indoor/enclosure E-rated medium voltage, current-limiting fuse links for potential & small power transformers with blown fuse link indication.

Ratings:

Rated Voltage: 2.4 - 8.3kV

Rated Current: ½ - 750A

Breaking Capacity: 40 - 63kA Sym



Features and Benefits:

- Physically dimensioned for retrofitting in existing hardware
- Open fuse indicator for ease in troubleshooting
- Full range ANSI classification

Typical Applications:

- Medium voltage transformer primary protection
- Medium voltage feeder circuit protection
- Medium voltage switches
- Medium voltage metal-enclosed switchgear

Part Numbers

Part Number	Rated Voltage	Rated Current	Interrupting Capacity Sym kA	Number of Barrels	Length inches (mm)	Diameter inches (mm)
JCX-½E	2.4kV	0.5E	40	1	9.19 (233)	2 (51)
JCX-1E	2.4kV	1E	40	1	9.19 (233)	2 (51)
JCX-2E	2.4kV	2E	40	1	9.19 (233)	2 (51)
JCX-3E	2.4kV	3E	40	1	9.19 (233)	2 (51)
JCX-5E	2.4kV	5E	40	1	9.19 (233)	2 (51)
JCX-7E	2.4kV	7E	40	1	9.19 (233)	2 (51)
JCX-10E	2.4kV	10E	40	1	9.19 (233)	2 (51)
JCX-15E	2.4kV	15E	50	1	9.50 (241)	2.1 (53)
JCX-20E	2.4kV	20E	50	1	9.50 (241)	2.1 (53)
JCX-25E	2.4kV	25E	50	1	9.50 (241)	2.1 (53)
JCX-30E	2.4kV	30E	50	1	10.88 (276)	3 (76)
JCX-40E	2.4kV	40E	50	1	10.88 (276)	3 (76)
JCX-50E	2.4kV	50E	50	1	10.88 (276)	3 (76)
JCX-65E	2.4kV	65E	50	1	10.88 (276)	3 (76)
JCX-80E	2.4kV	80E	50	1	10.88 (276)	3 (76)
JCX-100E	2.4kV	100E	50	1	10.88 (276)	3 (76)
JCX-125E	2.4kV	125E	50	1	10.88 (276)	3 (76)
JCX-150E	2.4kV	150E	50	1	10.88 (276)	3 (76)
JCX-200E	2.4kV	200E	50	1	10.88 (276)	3 (76)
JCX-225E	2.4kV	225E	50	1	10.88 (276)	3 (76)
JCX-250E/280X	2.4kV	250E	50	1	10.88 (276)	3 (76)
JCX-300E/325X	2.4kV	300E	50	1	10.88 (276)	3 (76)
JCX-350E	2.4kV	350E	50	1	10.88 (276)	3 (76)
JCX-400X	2.4kV	400X	50	1	10.88 (276)	3 (76)
JCX-450X	2.4kV	450X	50	1	10.88 (276)	3 (76)

JCX, JCY, JCU, JCZ and JDZ E-Rated Fuse Links for Potential and Small Power Transformers

Part Number	Rated Voltage	Rated Current	Interrupting Capacity Sym	Number of Barrels	Length inches (mm)	Diameter inches (mm)
JCY-½E	5.5kV	0.5E	40	1	11.19 (284)	2 (51)
JCY-1E	5.5kV	1E	40	1	11.19 (284)	2 (51)
JCY-2E	5.5kV	2E	40	1	11.19 (284)	2 (51)
JCY-3E	5.5kV	3E	40	1	11.19 (284)	2 (51)
JCY-5E	5.5kV	5E	40	1	11.19 (284)	2 (51)
JCY-7E	5.5kV	7E	40	1	11.19 (284)	2 (51)
JCY-10E	5.5kV	10E	40	1	11.19 (284)	2 (51)
JCY-15E	5.5kV	15E	40	1	11.19 (284)	2 (51)
JCY-20E	5.5kV	20E	40	1	11.19 (284)	2 (51)
JCY-25E	5.5kV	25E	40	1	11.19 (284)	2 (51)
JCU-10E	5.5kV	10E	50	1	17.81 (452)	3 (76)
JCU-15E	5.5kV	15E	50	1	12.87 (326)	2.1 (53)
JCU-20E	5.5kV	20E	50	1	12.87 (326)	2.1 (53)
JCU-25E	5.5kV	25E	50	1	12.87 (326)	2.1 (53)
JCU-30E	5.5kV	30E	63	1	17.88 (454)	3 (76)
JCU-40E	5.5kV	40E	63	1	17.88 (454)	3 (76)
JCU-50E	5.5kV	50E	63	1	17.88 (454)	3 (76)
JCU-65E	5.5kV	65E	63	1	17.88 (454)	3 (76)
JCU-80E	5.5kV	80E	63	1	17.88 (454)	3 (76)
JCU-100E	5.5kV	100E	63	1	17.88 (454)	3 (76)
JCU-125E	5.5kV	125E	63	1	17.88 (454)	3 (76)
JCU-150E	5.5kV	150E	63	1	17.88 (454)	3 (76)
JCU-175E	5.5kV	175E	63	1	17.88 (454)	3 (76)
JCU-200E	5.5kV	200E	63	1	17.88 (454)	3 (76)
JCU-250E	5.5kV	250E	63	1	17.88 (454)	3 (76)
JCU-300E	5.5kV	300E	63	1	17.88 (454)	3 (76)
JCU-350E	5.5kV	350E	63	1	17.88 (454)	3 (76)
JCU-400E	5.5kV	400E	63	1	17.88 (454)	3 (76)
JCU-450E	5.5kV	450E	63	1	17.88 (454)	3 (76)
JCU-600E	5.5kV	600E	50	1	28.81 (731)	4 (101)
JCU-750E	5.5kV	750E	50	1	28.81 (731)	4 (101)
JCZ-15E	8.3kV	15E	50	1	15.51 (393)	2.1 (53)
JCZ-20E	8.3kV	20E	50	1	15.51 (393)	2.1 (53)
JCZ-25E	8.3kV	25E	50	1	15.51 (393)	2.1 (53)
JCZ-30E	8.3kV	30E	50	1	17.88 (454)	3 (76)
JCZ-40E	8.3kV	40E	50	1	17.88 (454)	3 (76)
JCZ-50E	8.3kV	50E	50	1	17.88 (454)	3 (76)
JCZ-65E	8.3kV	65E	50	1	17.88 (454)	3 (76)
JCZ-80E	8.3kV	80E	50	1	17.88 (454)	3 (76)
JCZ-100E	8.3kV	100E	50	1	17.88 (454)	3 (76)
JCZ-125E	8.3kV	125E	50	1	17.88 (454)	3 (76)
JCZ-150E	8.3kV	150E	50	1	17.88 (454)	3 (76)
JCZ-200E	8.3kV	200E	50	1	17.88 (454)	3 (76)
JDZ-20E	8.3kV	20E	50	1	15.87 (403)	3 (76)
JDZ-25E	8.3kV	25E	50	1	15.87 (403)	3 (76)
JDZ-30E	8.3kV	30E	50	1	15.87 (403)	3 (76)
JDZ-40E	8.3kV	40E	50	1	15.87 (403)	3 (76)
JDZ-50E	8.3kV	50E	50	1	15.87 (403)	3 (76)
JDZ-65E	8.3kV	65E	50	1	15.87 (403)	3 (76)
JDZ-80E	8.3kV	80E	50	1	15.87 (403)	3 (76)
JDZ-100E	8.3kV	100E	50	1	15.87 (403)	3 (76)
JDZ-125E	8.3kV	125E	50	1	15.87 (403)	3 (76)

JCD, JCW, JCE, JCQ JCI, JCT E-Rated Fuse Links for Potential and Small Power Transformers

Specifications

Description: Indicating and non-indicating E-Rated medium voltage, current limiting fuse links for potential and small power transformers.

Ratings:

Rated Voltage: 2.4 - 15.5kV

Rated Current: ½ - 10A

Breaking Capacity: 25 - 80kA Sym

Typical Applications:

- Primary protection of medium voltage potential transformers.



Part Numbers

Part Number	Rated Voltage	Rated Current	Interrupting Capacity Sym kA	Number of Barrels	Length inches (mm)	Diameter inches (mm)
JCD-½E	2.4kV	0.5E	63	1	4.49 (114)	0.8 (20)
JCD-1E	2.4kV	1E	40	1	4.49 (114)	0.8 (20)
JCD-2E	2.4kV	2E	40	1	4.49 (114)	0.8 (20)
JCD-5E	2.4kV	5E	25	1	4.49 (114)	0.8 (20)
JCW-½E	2.4kV/5.5kV	0.5E	40	1	7.31 (185)	1.56 (39)
JCW-1E	2.4kV/5.5kV	1E	40	1	7.31 (185)	1.56 (39)
JCW-2E	2.4kV/5.5kV	2E	40	1	7.31 (185)	1.56 (39)
JCW-3E	2.4kV/5.5kV	3E	40	1	7.31 (185)	1.56 (39)
JCW-4E	2.4kV/5.5kV	4E	40	1	7.31 (185)	1.56 (39)
JCW-5E	2.4kV/5.5kV	5E	40	1	7.31 (185)	1.56 (39)
JCE-½E	5.5kV	0.5E	50	1	5.63 (143)	0.8 (20)
JCE-1E	5.5kV	1E	50	1	5.63 (143)	0.8 (20)
JCE-2E	5.5kV	2E	50	1	5.63 (143)	0.8 (20)
JCE-3E	5.5kV	3E	50	1	5.63 (143)	0.8 (20)
JCE-4E	5.5kV	4E	50	1	5.63 (143)	0.8 (20)
JCE-5E	5.5kV	5E	50	1	5.63 (143)	0.8 (20)
JCQ-½E	5.5kV	0.5E	80	1	9.50 (241)	1.6 (40)
JCQ-1E	5.5kV	1E	80	1	9.50 (241)	1.6 (40)
JCQ-1-½E	5.5kV	1.5E	80	1	9.50 (241)	1.6 (40)
JCQ-3E	5.5kV	3E	80	1	9.44 (239)	1.6 (40)
JCQ-5E	5.5kV	5E	80	1	9.44 (239)	1.6 (40)
JCQ-10E	5.5kV	10E	80	1	9.44 (239)	1.6 (40)
JCI-½E	8.3kV	0.5E	80	1	9.50 (241)	1.6 (40)
JCI-3E	8.3kV	3E	80	1	12.88 (327)	1.6 (40)
JCI-5E	8.3kV	5E	80	1	12.88 (327)	1.6 (40)
JCI-10E	8.3kV	10E	80	1	12.88 (327)	1.6 (40)
JCT-½E	15.5kV	0.5E	80	1	12.93 (328)	1.6 (40)
JCT-1E	15.5kV	1E	80	1	12.93 (328)	1.6 (40)
JCT-1-½E	15.5kV	1.5E	80	1	12.93 (328)	1.6 (40)
JCT-3E	15.5kV	3E	80	1	17.50 (444)	1.6 (40)
JCT-5E	15.5kV	5E	80	1	17.50 (444)	1.6 (40)
JCT-10E	15.5kV	10E	80	1	17.50 (444)	1.6 (40)

E-Rated Fuse Links for Potential and Small Power Transformers

Specifications

Description: Indicating and non-indicating E-Rated medium voltage, current-limiting fuses for potential and small power transformers.

Ratings:

Rated Voltage: 5 - 38kV (See part numbers table for details)

Rated Current: 0.5 - 7E

Breaking Capacity: 40 - 80kA

Time-Current Curves and Cut-Off Curves: see list page 121 and data on CD at the back of the catalogue.

Typical Applications:

- Primary protection of medium voltage potential transformers.



Part Numbers

Part Number	Rated Voltage	Rated Current	Interrupting Capacity Sym kA	Number of Barrels	Length inches (mm)	Diameter inches (mm)	Clipping Centres inches (mm)
5.5AMWNA0.5E	5.5kV	0.5E	50	1	5.59 (141)	0.81 (20)	-
5.5AMWNA1E	5.5kV	1E	50	1	5.59 (141)	0.81 (20)	-
5.5AMWNA2E	5.5kV	2E	50	1	5.59 (141)	0.81 (20)	-
5.5AMWNA3E	5.5kV	3E	50	1	5.59 (141)	0.81 (20)	-
5.5AMWNA4E	5.5kV	4E	50	1	5.59 (141)	0.81 (20)	-
5.5AMWNA5E	5.5kV	5E	50	1	5.59 (141)	0.81 (20)	-
5.5ABWNA0.5E	5.5kV	0.5E	50	1	5.59 (141)	1 (25)	-
5.5ABWNA1E	5.5kV	1E	50	1	5.59 (141)	1 (25)	-
5.5ABWNA2E	5.5kV	2E	50	1	5.59 (141)	1 (25)	-
5.5ABWNA3E	5.5kV	3E	50	1	5.59 (141)	1 (25)	-
5.5ABWNA5E	5.5kV	5E	50	1	5.59 (141)	1 (25)	-
5.5CAV15E	5.5kV	15E	50	1	7.36 (186)	1.63 (41)	6 (152)
5.5CAVH0.5E	5.5kV	0.5E	50	1	7.36 (186)	1.63 (41)	6 (152)
5.5CAVH1E	5.5kV	1E	50	1	7.36 (186)	1.63 (41)	6 (152)
5.5CAVH2E	5.5kV	2E	50	1	7.36 (186)	1.63 (41)	6 (152)
7.2AMWNA0.5E	7.2kV	0.5E	50	1	5.59 (141)	0.81 (20)	-
7.2AMWNA1.0E	7.2kV	1E	50	1	5.59 (141)	0.81 (20)	-
7.2AMWNA2.0E	7.2kV	2E	50	1	5.59 (141)	0.81 (20)	-
7.2AMWNA3.0E	7.2kV	3E	50	1	5.59 (141)	0.81 (20)	-
7.2AMWNA4.0E	7.2kV	4E	50	1	5.59 (141)	0.81 (20)	-
7.2AMWNA5.0E	7.2kV	5E	50	1	5.59 (141)	0.81 (20)	-
15.5CAV0.5E	15.5kV	0.5E	80	1	12.87 (326)	1.63 (41)	11.5 (292)
15.5CAV1E	15.5kV	1E	80	1	12.87 (326)	1.63 (41)	11.5 (292)
15.5CAV2E	15.5kV	2E	80	1	12.87 (326)	1.63 (41)	11.5 (292)
15.5CAV3E	15.5kV	3E	80	1	12.87 (326)	1.63 (41)	11.5 (292)
15.5CAV5E	15.5kV	5E	80	1	12.87 (326)	1.63 (41)	11.5 (292)
15.5CAV7E	15.5kV	7E	80	1	12.87 (326)	1.63 (41)	11.5 (292)
15.5CAVH0.5E	15.5kV	0.5E	80	1	12.87 (326)	1.63 (41)	11.5 (292)
15.5CAVH1E	15.5kV	1E	80	1	12.87 (326)	1.63 (41)	11.5 (292)
15.5CAVH2E	15.5kV	2E	80	1	12.87 (326)	1.63 (41)	11.5 (292)
38CAVH0.5E	38kV	0.5E	40	1	17.32 (439)	1.63 (41)	15 (381)
38CAVH1E	38kV	1E	40	1	17.32 (439)	1.63 (41)	15 (381)
38CAVH2E	38kV	2E	40	1	17.32 (439)	1.63 (41)	15 (381)
38CAV4E	38kV	4E	40	1	17.32 (439)	1.63 (41)	15 (381)

E-Rated Fuse Links: 5.5kV CL-14 and Bolt-In

ECL055

Specifications

Description: E-Rated medium voltage, current limiting fuses for transformer and feeder protection.



Ratings:

Rated Voltage: 5.5kV E-Rated

Rated Current: 10 - 900A

Breaking Capacity: 63kA Sym. Max

Agency Information: Meets E requirements per ANSI C37.46, meets General Purpose requirements per ANSI C37.40.

Typical Applications:

- 5kV Transformer primary protection.
- 5kV Feeder circuit protection.
- 5kV Voltage switches.
- 5kV Metal-enclosed switchgear.

Part Numbers

Part Numbers	Rated Voltage (kV)	Rated Current (E)	Breaking Capacity (Sym) kA	Number of Barrels
ECL055-10E	5.5	10	63	1
ECL055-15E	5.5	15	63	1
ECL055-20E	5.5	20	63	1
ECL055-25E	5.5	25	63	1
ECL055-30E	5.5	30	63	1
ECL055-40E	5.5	40	63	1
ECL055-50E	5.5	50	63	1
ECL055-65E	5.5	65	63	1
ECL055-80E	5.5	80	63	1
ECL055-100E	5.5	100	63	1
ECL055-125E	5.5	125	63	1
ECL055-150E	5.5	150	63	1
ECL055-200E	5.5	200	63	1
ECL055-250E	5.5	250	63	1
ECL055-300E	5.5	300	63	2
ECL055-400E	5.5	400	63	2
ECL055-450E	5.5	450	63	2
ECL055-500E	5.5	500	63	2
ECL055-600E	5.5	600	63	2
ECL055-750E	5.5	750	63	3
ECL055-900E	5.5	900	63	3

Part Number Construction (example)

Part Number	Voltage Rating	Ampere Rating
ECL	055	300E

(055 = 5.5kV)

E-Rated Fuse Links: 8.3kV CL-14

ECL083

Specifications

Description: E-rated medium voltage, current limiting fuses for transformer and feeder protection.



Ratings:

Rated Voltage: 8.3kV E-Rated

Rated Current: 65 - 350A

Breaking Capacity: 50kA

Agency Information: Meets E requirements per ANSI C37.46, meets General Purpose requirements per ANSI C37.40.

Typical Applications:

- 8.3kV Transformer primary protection.
- 8.3kV Feeder circuit protection.
- 8.3kV Voltage switches.
- 8.3kV Metal-enclosed switchgear.

Part Numbers

Part Numbers	Rated Voltage (kV)	Rated Current (E)	Breaking Capacity (Sym) kA	Number of Barrels
ECL083-65E	8.3	65	50	1
ECL083-80E	8.3	80	50	1
ECL083-100E	8.3	100	50	1
ECL083-125E	8.3	125	50	1
ECL083-150E	8.3	150	50	1
ECL083-175E	8.3	175	50	1
ECL083-200E	8.3	200	50	2
ECL083-250E	8.3	250	50	2
ECL083-300E	8.3	300	50	2
ECL083-350E	8.3	350	50	2

Part Number Construction (example)

Part Number	Voltage Rating	Ampere Rating
ECL	083	300E

(083 = 8.3kV)

E-Rated Fuse Links: 15.5kV CL-14

ECL155

Specifications

Description: E-rated medium voltage, current limiting fuses for transformer and feeder protection.



Ratings:

Rated Voltage: 15.5kV E-Rated

Rated Current: 10 - 300A

Breaking Capacity: 63kA Sym. (10-200A)

50kA Sym. (250-300A)

Agency Information: Meets E requirements per ANSI C37.46, meets General Purpose requirements per ANSI C37.40.

Typical Applications:

- 15kV transformer primary protection.
- 15kV feeder circuit protection.
- 15kV voltage switches.
- 15kV metal-enclosed switchgear.

Part Numbers

Part Numbers	Rated Voltage (kV)	Rated Current (E)	Breaking Capacity (Sym) kA	Number of Barrels
ECL155-10E	15.5	10	63	1
ECL155-15E	15.5	15	63	1
ECL155-20E	15.5	20	63	1
ECL155-25E	15.5	25	63	1
ECL155-30E	15.5	30	63	1
ECL155-40E	15.5	40	63	1
ECL155-50E	15.5	50	63	1
ECL155-65E	15.5	65	63	1
ECL155-80E	15.5	80	63	1
ECL155-100E	15.5	100	63	1
ECL155-125E	15.5	125	63	1
ECL155-150E	15.5	150	63	2
ECL155-200E	15.5	200	63	2
ECL155-250E	15.5	250	50	2
ECL155-300E	15.5	300	50	2

Part Number Construction (example)

Part Number	Voltage Rating	Ampere Rating
ECL	155	300E

(155 = 15.5kV)

R-Rated Fuse Links for Motor Circuit Protection

Specifications

Description: Indoor/enclosure R-Rated medium voltage, current-limiting fuse links for motor circuit protection.

Ratings:

Rated Voltage: 2.4 - 7.2kV
 Rated Current: 25 - 450A
 Breaking Capacity: 50kA Sym



Agency Information: UL recognized: 2540Vac — JCK, JCK-A, 5080Vac — JCL, JCL-A, UL recognized (Guide #MSSS2, File #E96676).

Typical Applications:

- Medium voltage motor controllers.

Dimensions

Figure 1

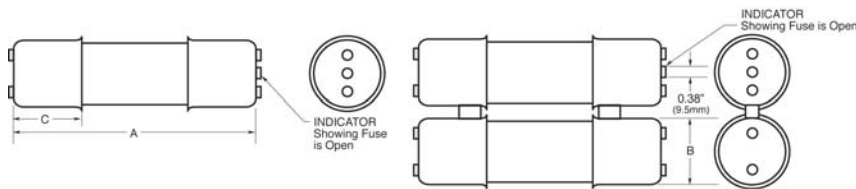


Figure 2

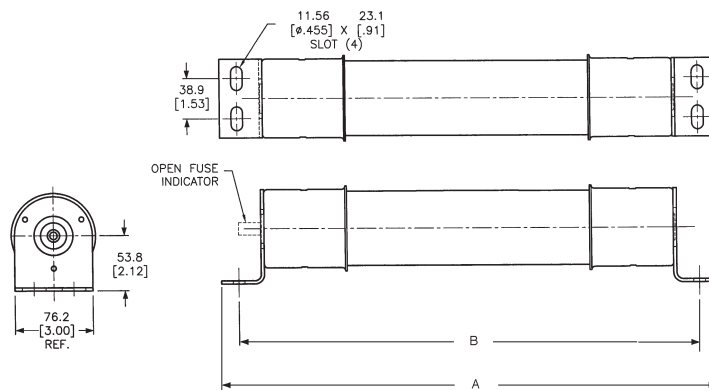
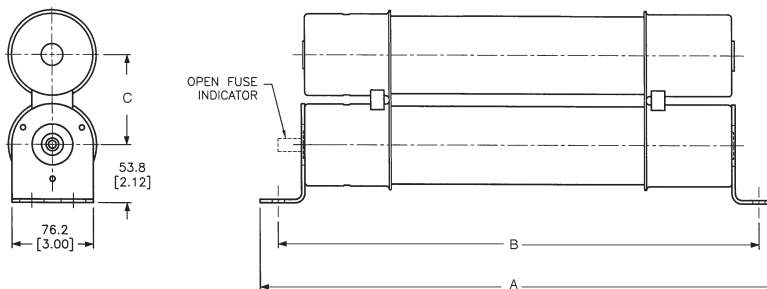


Figure 3



R-Rated Fuse Links for Motor Circuit Protection

Part Numbers

Part Numbers	Rated Current (A)	Interrupting Capacity Sym kA	Number of Barrels	Length in (mm)	Diameter in (mm)
2400V (see figure 1)					
JCK-2R	70A	50	1	11.24 (285)	3 (76)
JCK-3R	100A	50	1	11.24 (285)	3 (76)
JCK-4R	130A	50	1	11.24 (285)	3 (76)
JCK-5R	150A	50	1	11.24 (285)	3 (76)
JCK-6R	170A	50	1	11.24 (285)	3 (76)
JCK-9R	200A	50	1	11.24 (285)	3 (76)
JCK-12R	230A	50	1	11.24 (285)	3 (76)
JCK-18R	390A	50	2	11.24 (285)	3 (76)
JCK-24R	450A	50	2	11.24 (285)	3 (76)
2400V - With Westinghouse Ampguard Hookeye (see figure 1)					
JCK-A-2R	70A	50	1	11.24 (285)	3 (76)
JCK-A-3R	100A	50	1	11.24 (285)	3 (76)
JCK-A-4R	130A	50	1	11.24 (285)	3 (76)
JCK-A-5R	150A	50	1	11.24 (285)	3 (76)
JCK-A-6R	170A	50	1	11.24 (285)	3 (76)
JCK-A-9R	200A	50	1	11.24 (285)	3 (76)
JCK-A-12R	230A	50	1	11.24 (285)	3 (76)
JCK-A-18R	390A	50	2	11.24 (285)	3 (76)
JCK-A-24R	450A	50	2	11.24 (285)	3 (76)
2400V - Bolt-On (see figures 2 and 3)					
JCK-B-30	25A	50	1	14.18 (360)	3 (76)
JCK-B-2R	70A	50	1	14.18 (360)	3 (76)
JCK-B-3R	100A	50	1	14.18 (360)	3 (76)
JCK-B-4R	130A	50	1	14.18 (360)	3 (76)
JCK-B-5R	150A	50	1	14.18 (360)	3 (76)
JCK-B-6R	170A	50	1	14.18 (360)	3 (76)
JCK-B-9R	200A	50	1	14.18 (360)	3 (76)
JCK-B-12R	230A	50	1	14.18 (360)	3 (76)
JCK-B-18R	390A	50	2	14.18 (360)	3 (76)
JCK-B-24R	450A	50	2	14.18 (360)	3 (76)
2400V - Hermetically Sealed, for Use with Ampguard Motor Starters (see figure 1)					
JCH-30	25A	50	1	10.81 (275)	3 (76)
JCH-2R	70A	50	1	10.81 (275)	3 (76)
JCH-3R	100A	50	1	10.81 (275)	3 (76)
JCH-4R	130A	50	1	10.81 (275)	3 (76)
JCH-5R	150A	50	1	10.81 (275)	3 (76)
JCH-6R	170A	50	1	10.81 (275)	3 (76)
JCH-9R	200A	50	1	10.81 (275)	3 (76)
JCH-12R	230A	50	1	10.81 (275)	3 (76)
JCH-18R	390A	50	2	10.81 (275)	3 (76)
JCH-24R	450A	50	2	10.81 (275)	3 (76)
4800V (see figure 1)					
JCL-2R	70	50	1	15.76 (400)	3 (76)
JCL-3R	100	50	1	15.76 (400)	3 (76)
JCL-4R	130	50	1	15.76 (400)	3 (76)
JCL-5R	150	50	1	15.76 (400)	3 (76)
JCL-6R	170	50	1	15.76 (400)	3 (76)
JCL-9R	200	50	1	15.76 (400)	3 (76)
JCL-12R	230	50	1	15.76 (400)	3 (76)
JCL-18R	390	50	2	15.76 (400)	3 (76)
JCL-24R	450	50	2	15.76 (400)	3 (76)

R-Rated Fuse Links for Motor Circuit Protection

Part Numbers

Part Numbers	Rated Current (A)	Interrupting Capacity Sym kA	Number of Barrels	Length in (mm)	Diameter in (mm)
4800V - With Westinghouse Ampguard Hookeye (see figure 1)					
JCL-A-2R	70	50	1	15.76 (400.3)	3 (76.2)
JCL-A-3R	100	50	1	15.76 (400.3)	3 (76.2)
JCL-A-4R	130	50	1	15.76 (400.3)	3 (76.2)
JCL-A-5R	150	50	1	15.76 (400.3)	3 (76.2)
JCL-A-6R	170	50	1	15.76 (400.3)	3 (76.2)
JCL-A-9R	200	50	1	15.76 (400.3)	3 (76.2)
JCL-A-12R	230	50	1	15.76 (400.3)	3 (76.2)
JCL-A-18R	390	50	2	15.76 (400.3)	3 (76.2)
JCL-A-24R	450	50	2	15.76 (400.3)	3 (76.2)
4800V - Bolt-On (see figures 2 and 3)					
JCL-B-30	30	50	1	19.25 (488.9)	3 (76.2)
JCL-B-2R	70	50	1	19.25 (488.9)	3 (76.2)
JCL-B-3R	100	50	1	19.25 (488.9)	3 (76.2)
JCL-B-4R	130	50	1	19.25 (488.9)	3 (76.2)
JCL-B-5R	150	50	1	19.25 (488.9)	3 (76.2)
JCL-B-6R	170	50	1	19.25 (488.9)	3 (76.2)
JCL-B-9R	200	50	1	19.25 (488.9)	3 (76.2)
JCL-B-12R	230	50	1	19.25 (488.9)	3 (76.2)
JCL-B-18R	390	50	2	19.25 (488.9)	3 (76.2)
JCL-B-24R	450	50	2	19.25 (488.9)	3 (76.2)
4800V - Hermetically Sealed, for use with Ampguard Motor Starters (see figure 1)					
JCG-30	30	50	1	15.91 (404.1)	3 (76.2)
JCG-2R	70	50	1	15.91 (404.1)	3 (76.2)
JCG-3R	100	50	1	15.91 (404.1)	3 (76.2)
JCG-4R	130	50	1	15.91 (404.1)	3 (76.2)
JCG-5R	150	50	1	15.91 (404.1)	3 (76.2)
JCG-6R	170	50	1	15.91 (404.1)	3 (76.2)
JCG-9R	200	50	1	15.91 (404.1)	3 (76.2)
JCG-12R	230	50	1	15.91 (404.1)	3 (76.2)
JCG-A-18R	390	50	2	15.91 (404.1)	3 (76.2)
JCG-A-24R	450	50	2	15.91 (404.1)	3 (76.2)
7200V - With Ampguard Hookeye (see figure 1)					
JCR-A-2R	70	50	1	15.85 (402.6)	3 (76.2)
JCR-A-3R	100	50	1	15.85 (402.6)	3 (76.2)
JCR-A-4R	130	50	1	15.85 (402.6)	3 (76.2)
JCR-A-5R	150	50	1	15.85 (402.6)	3 (76.2)
JCR-A-6R	170	50	1	15.85 (402.6)	3 (76.2)
JCR-A-9R	200	50	1	15.85 (402.6)	3 (76.2)
JCR-A-12R	230	50	1	15.85 (402.6)	3 (76.2)
JCR-A-18R	390	50	2	15.85 (402.6)	3 (76.2)
JCR-A-24R	450	50	2	15.85 (402.6)	3 (76.2)
7200V - Bolt-on (see figures 2 and 3)					
JCR-B-2R	70	50	1	19.25 (488.9)	3.31 (84.1)
JCR-B-3R	100	50	1	19.25 (488.9)	3.31 (84.1)
JCR-B-4R	130	50	1	19.25 (488.9)	3.31 (84.1)
JCR-B-5R	150	50	1	19.25 (488.9)	3.31 (84.1)
JCR-B-6R	170	50	1	19.25 (488.9)	3.31 (84.1)
JCR-B-9R	200	50	1	19.25 (488.9)	3.31 (84.1)
JCR-B-12R	230	50	1	19.25 (488.9)	3.31 (84.1)
JCR-B-18R	390	50	2	19.25 (488.9)	3.31 (84.1)
JCR-B-24R	450	50	2	19.25 (488.9)	3.31 (84.1)